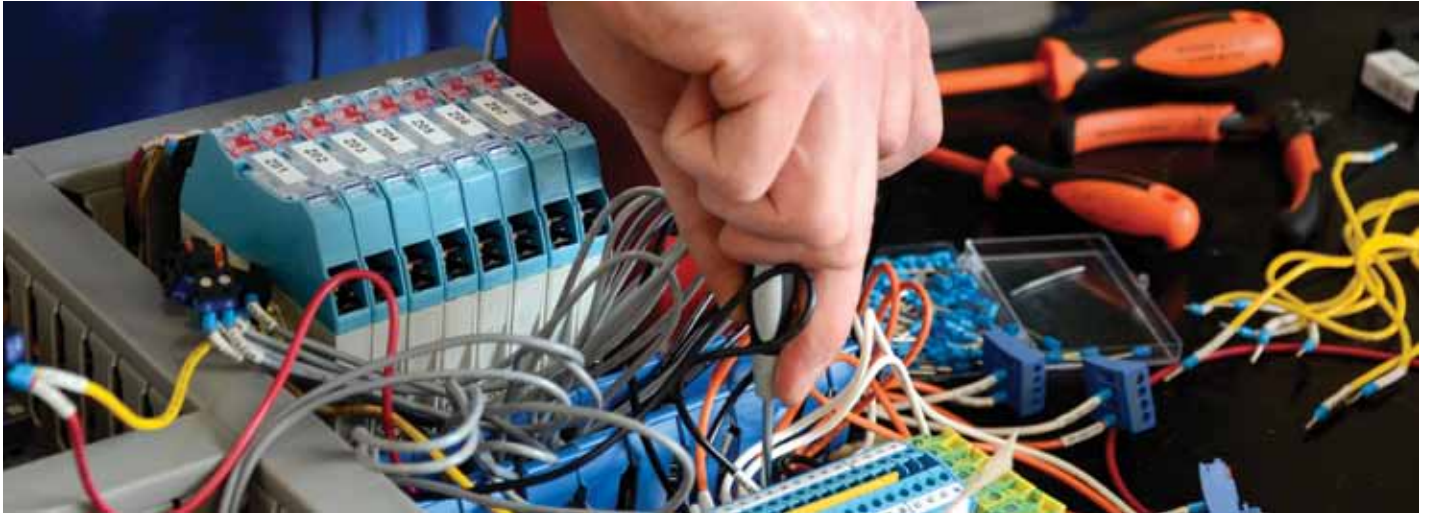


# MAKE IT MORAY FOR ENERGY



EFC Group

## MORAY IS HOME TO AN EXPERIENCED, MULTIDISCIPLINED AND CROSS SECTORAL SUPPLY CHAIN

Scotland's offshore wind generating capacity is set for expansion with 7000 turbines installed in UK waters over the next decade and £30 billion investment in Scotland alone. A generating capacity of 10.5 GW is currently planned for Scottish waters.

Initial analysis by Scottish Enterprise and Highlands and Islands Enterprise has identified over 750 companies in Scotland who are already supplying products and services to the market or have shown aspirations to diversify into this market.

Moray is in a strategic location, between Scotland's oil capital Aberdeen and the Highlands' capital city, Inverness. The region is well linked by road, rail, air and sea to other parts of Scotland and the UK making it easy to access markets throughout the UK and beyond.

### FOR MORE INFORMATION CONTACT

**Steven Hutcheon**  
Head of Regional Development

T +44 (0) 1309 696000  
E [steven.hutcheon@hient.co.uk](mailto:steven.hutcheon@hient.co.uk)

**'...The initial attraction to the Enterprise Park was the ability to source a stable workforce.'**

Bob Will, CEO EFC Group



## A LOCATION OF CHOICE

Moray is the natural location to establish a business within the renewable energy sector. Our area has an established and sophisticated engineering and fabrication manufacturing base born from traditional land based industries and sectors evolving in to a number of supply chains including oil and gas across the last three decades.

This base today boasts 2nd and 3rd tier sub-contracting across the whole of that supply chain, with renewable energy now rapidly developing as the next and natural sector of interest and capability. A number of our businesses have the necessary pre-qualifications to feature on preferred sub-contractor lists for procurement and all have multi-skilled workforce which can transit from one sector to the next with relative ease.

Our manufacturing and production capabilities includes, but are not limited to; heavy and light fabrication in all metals, ship building, pipe work, electrical engineering (controls and highly specialised), construction, precision engineering, R&D and design, hydraulics, coating and many other key supply chain services.

By choosing to locate a key part of their business in The Enterprise Park Forres (EPF), monitoring and instrumentation specialists EFC Group have been able to expand their business, recruit skilled staff and build bespoke new facilities with plenty of room to grow. Add in reduced commuting time, better staff retention and an unrivalled quality of life, it's clear the move has made perfect business sense. In a little over a year the company's Forres operation has grown from a single person in a serviced office to a current complement of around 18, with ambitious plans for an additional 30 staff in the years ahead.

Situated between Aberdeen and Inverness, EPF boasts the perfect location, especially for companies operating in the oil and gas and Energy sector. EPF stretches over 100 acres of land and is home to a mix of diverse businesses across a range of sectors. The park provides a thriving environment with a unique range of high quality units, land development opportunities and an on-site business and innovation centre, Horizon Scotland.

## MORAY OFFSHORE WIND OPPORTUNITIES

In the Highlands there are over 200 business units already involved in renewable energy. Offshore wind farms are being established off the Moray Firth. The strengths of engineering in Moray combined with the opportunities presented by locations, such as Buckie Harbour for servicing the developments, provides a compelling case for investment.

Buckie Harbour has already established itself as a base for the support of two deep water test turbines. Servicing activity including maintenance work for the Beatrice wind demonstrator, the world's first deep water offshore wind turbine is undertaken from Buckie Harbour.

It is anticipated that 384 wind turbines will be erected in the Moray Firth area in the next few years. This will generate 38,400 routine service visits over the next 50 years each requiring engineering support. There will also be more major maintenance and overhaul work required as well as onshore developments.

## OTHER RENEWABLES

There are a range of other renewable opportunities in Moray, including biomass; anaerobic digestion from waste from the food industry; and in the longer term engineering work for wave / tidal power generation and carbon capture.

## SKILLS AND EXPERTISE

Salaries in Moray are 75% of the level of those in Aberdeen and have been unaffected by the oil and gas boom in the Aberdeen area. Moray is an established base for manufacturing, engineering and construction.

Figures excluding the RAF bases show that 8,197 people employed in Moray are involved in manufacturing, construction or utility provision. This represents 24% of the workforce compared to only 15% of the national workforce involved in these industries. In addition the personnel currently based at RAF Lossiemouth provide a broad occupational base environment and also have proven transferable skills.

The area has also provided large numbers of employees in the offshore oil and gas industry in addition to the skills available in

the local workforce. Electrical and mechanical engineering skills will be essential for the offshore wind industry and the onshore support activities.

Moray College part of the University of the Highlands and Islands produce a number of students each year who continue to add to the skills base. Courses provided include:

- Marine Science
- Environmental Science
- Aerospace Engineering
- A variety of sustainable energy and environmental management courses
- A wide variety of engineering capital courses focused on energy, electrical, construction, mechanical and marine engineering
- Shallow Geophysics for Archaeologists and Environmentalists
- Management

## BUSINESS SUPPORT

Highlands and Islands Enterprise (HIE), the Scottish Government's economic development agency for the Highlands and Islands of Scotland, along with Moray Council and Scottish Development International (SDI) work together to promote Moray's strong portfolio of assets and advantages to inward investors from around the globe.

Businesses locating to the Moray area may be able to benefit from the support of HIE, with specialist business advice, infrastructure, networking, access to industry experts and exclusive business programmes dependent on growth potential, ambition and sector.

